





HYDETM
SUITES & RESIDENCES

MIDTOWN MIAMI

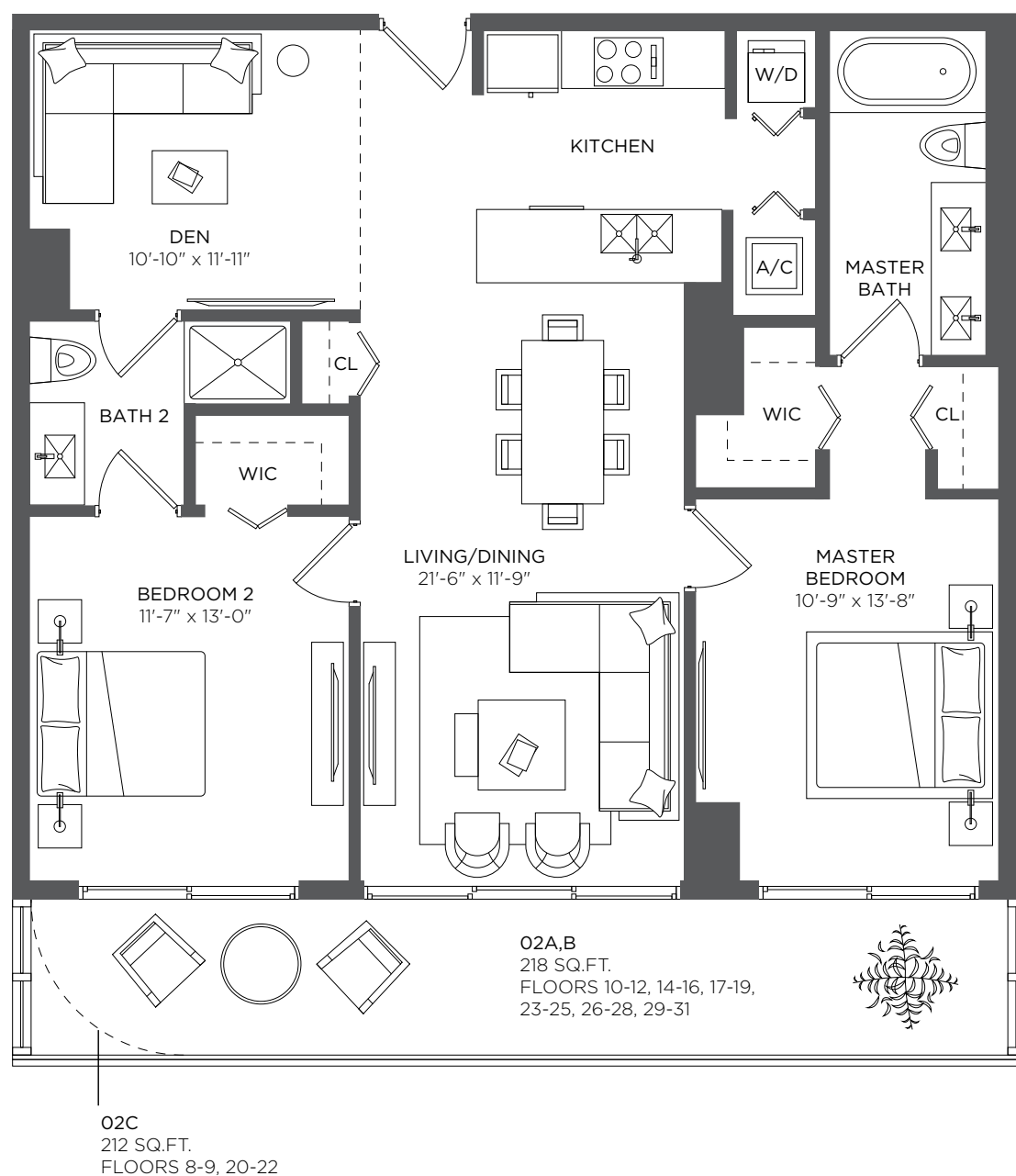
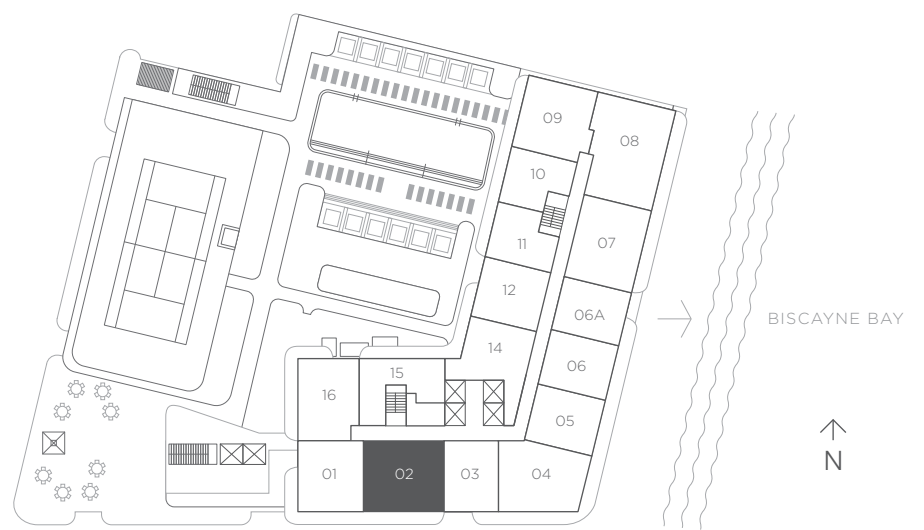
Floor Plans

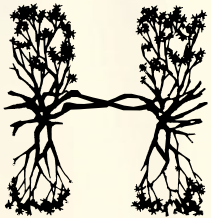
RESIDENCE 02

2 Bedrooms 2 Baths + Den

A/C INTERIOR AREA	1,171 sq ft / 108.78 sq m
TERRACE AREA	218 sq ft / 20.25 sq m
TOTAL RESIDENCE	1,389 sq ft / 129.03 sq m

FLOORS 8 - 31





HYDE[™]
SUITES & RESIDENCES
MIDTOWN MIAMI



RESIDENCE 08

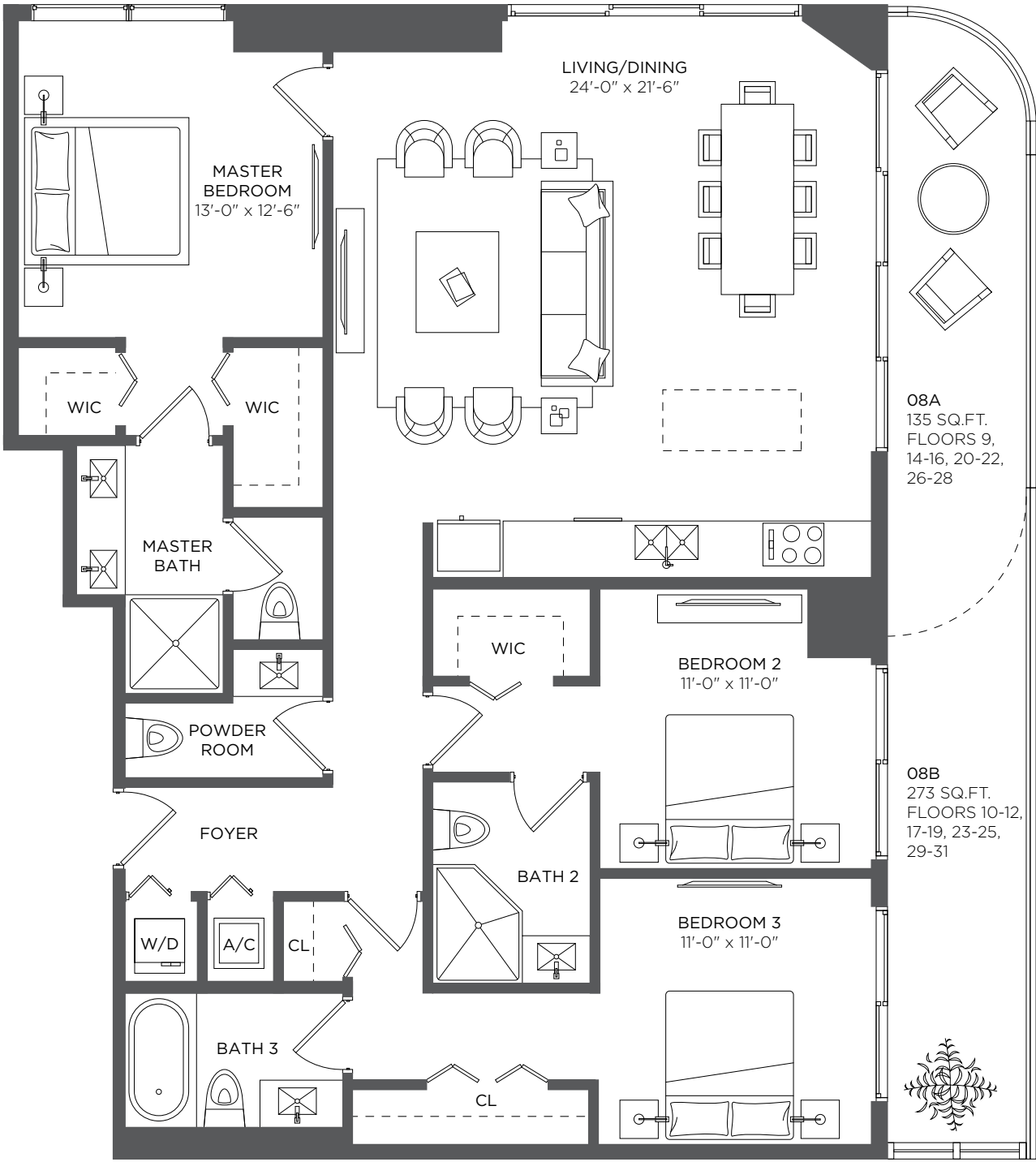
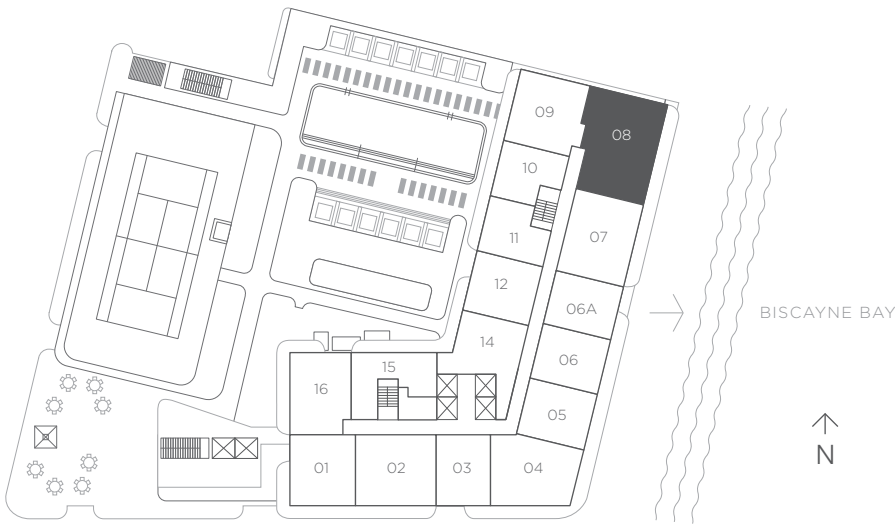
3 Bedrooms 3.5 Baths

A/C INTERIOR AREA 1,595 sq ft / 148.18 sq m

TERRACE AREA 273 sq ft / 25.36 sq m

TOTAL RESIDENCE 1,868 sq ft / 173.46 sq m

FLOORS 9 - 31



RELATED

sbe

DEZER
DEVELOPMENT



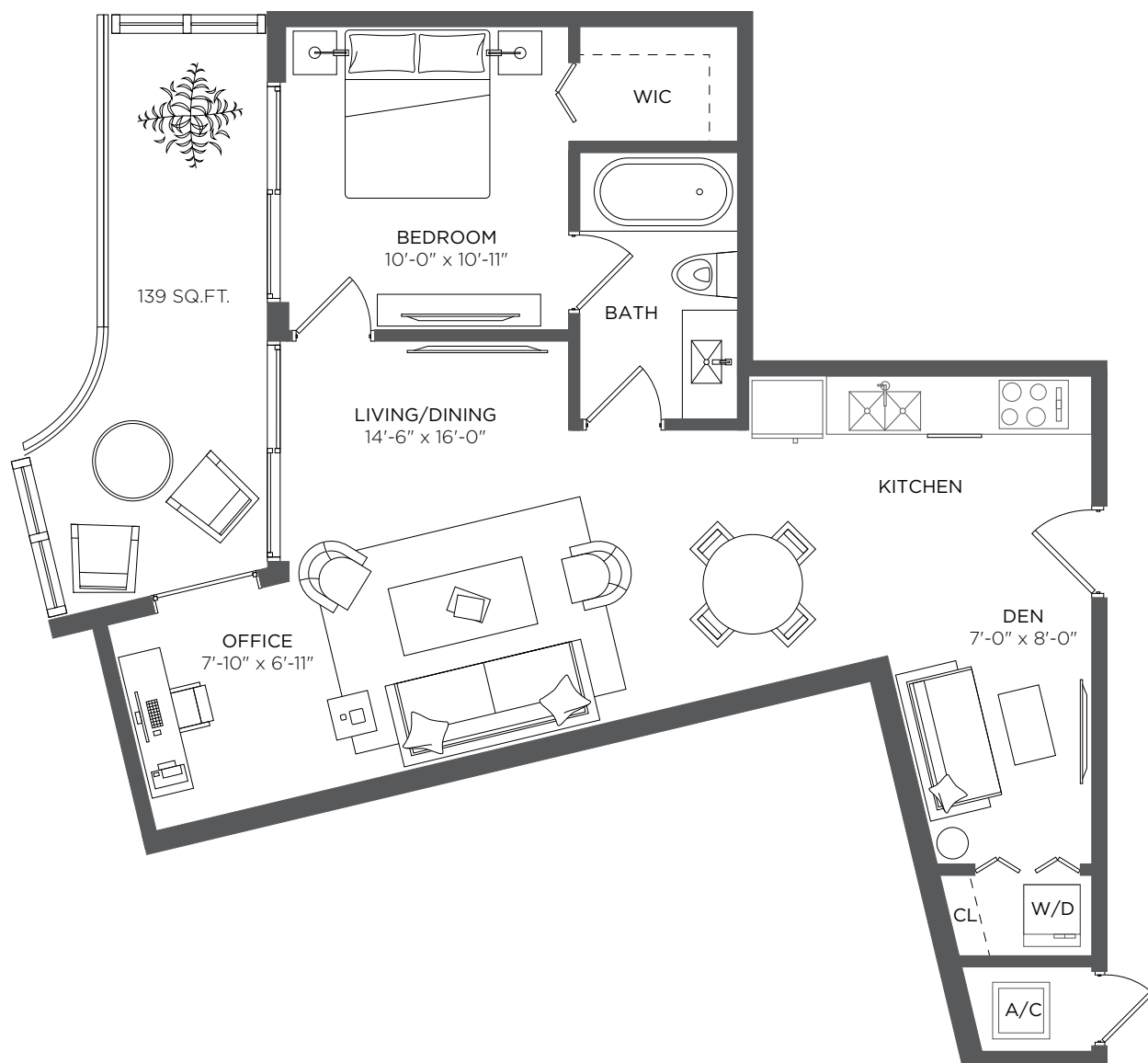
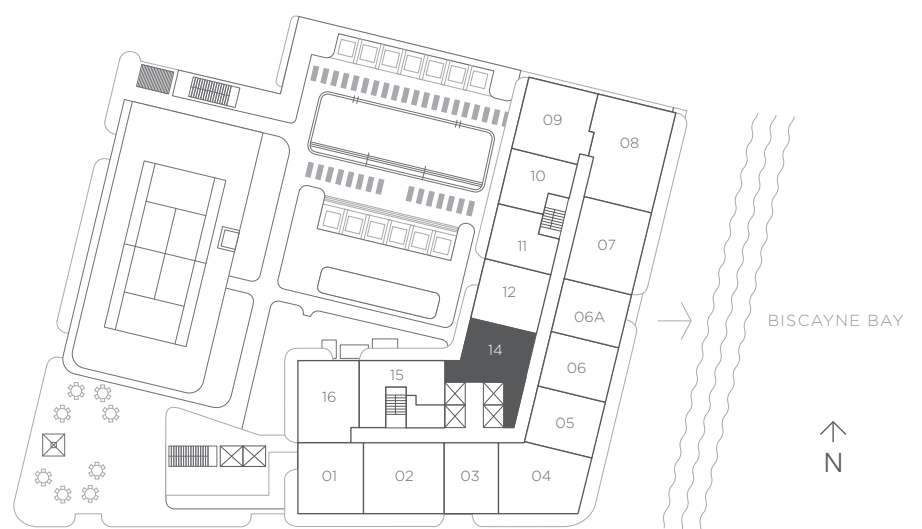
There are various methods for calculating the square footage of a Unit and depending on the method of calculation, the quoted square footage of a Unit in advertising materials may vary from the square footage of a Unit as stated or described in the Prospectus and the Declaration. The dimensions in the Unit shown in these floor plans have been calculated from the exterior boundaries of the exterior walls to the centerline of interior demising walls, including common elements such as structural walls and other interior structural components of the building and in fact vary from the dimensions that would be determined by using the description and definition of the "Unit" set forth in the Prospectus and the Declaration. For your reference, the area of the Unit, determined in accordance with the Unit boundaries as defined in the Prospectus and the Declaration is 1431 sqft for units 908, 1008, 1108, 1208, 1408, 1508, 1608, 1708, 1808, 1908, 2008, 2108, 2208, 2308, 2408, 2508, 2608, 2708, 2808, 2908, 3008 and 3108, which is less than the square footage reflected here. The measurements of room set forth on this floor plan are generally taken at the greatest points of each given room (as if the room were a perfect rectangle) without regard for any cutouts. Accordingly, the area of the actual room will typically smaller than the product obtained by multiplying the stated length times width. All dimensions are approximate and may vary with actual construction. All floor plans are subject to change. The furnishings and décor illustrated are not included with the purchase of the Unit. See Prospectus for information regarding what is offered with the Unit and the calculation of the Unit square footage and dimensions.

RESIDENCE 14

1 Bedroom 1 Bath + Den

A/C INTERIOR AREA	825 sq ft / 85.93 sq m
TERRACE AREA	139 sq ft / 12.91 sq m
TOTAL RESIDENCE	964 sq ft / 98.84 sq m

FLOORS 8 - 31



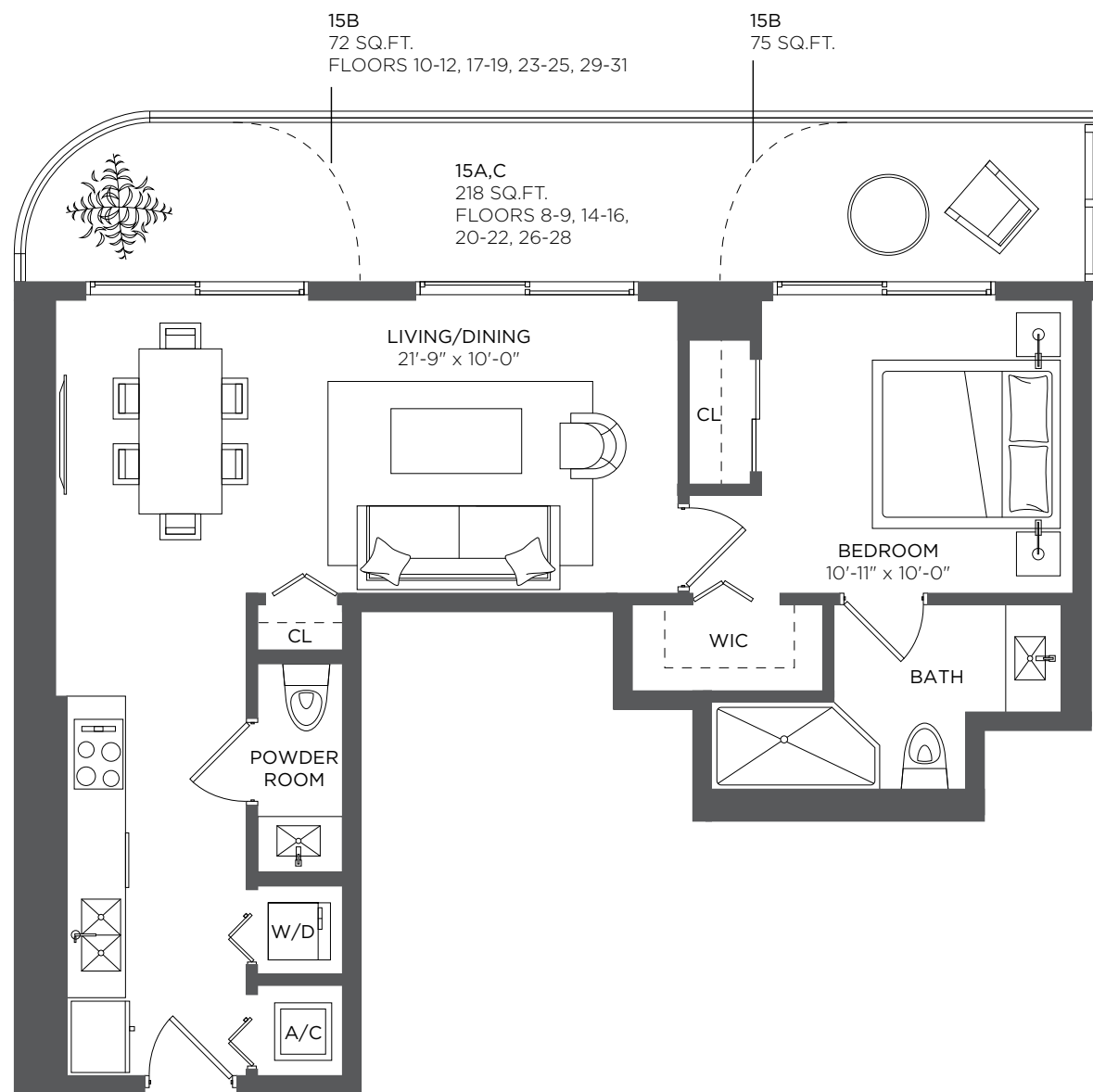
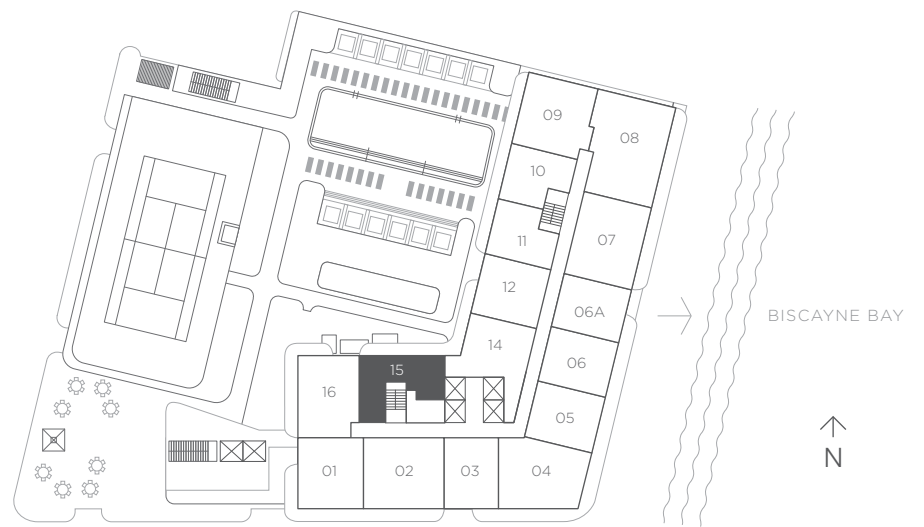
There are various methods for calculating the square footage of a Unit and depending on the method of calculation, the quoted square footage of a Unit in advertising materials may vary from the square footage of a Unit as stated or described in the Prospectus and the Declaration. The dimensions in the Unit shown in these floor plans have been calculated from the exterior boundaries of the exterior walls to the centerline of interior demising walls, including common elements such as structural walls and other interior structural components of the building and in fact vary from the dimensions that would be determined by using the description and definition of the "Unit" set forth in the Prospectus and the Declaration. For your reference, the area of the Unit, determined in accordance with the Unit boundaries as defined in the Prospectus and the Declaration is 681 sqft for units 814, 914, 1014, 1114, 1214, 1414, 1514, 1614, 1714, 1814, 1914, 2014, 2114, 2214, 2314, 2414, 2514, 2614, 2714, 2814, 2914, 3014 and 3114, which is less than the square footage reflected here. The measurements of room set forth on this floor plan are generally taken at the greatest points of each given room (as if the room were a perfect rectangle) without regard for any cutouts. Accordingly, the area of the actual room will typically smaller than the product obtained by multiplying the stated length times width. All dimensions are approximate and may vary with actual construction. All floor plans are subject to change. The furnishings and décor illustrated are not included with the purchase of the Unit. See Prospectus for information regarding what is offered with the Unit and the calculation of the Unit square footage and dimensions.

RESIDENCE 15

1 Bedroom 1.5 Baths

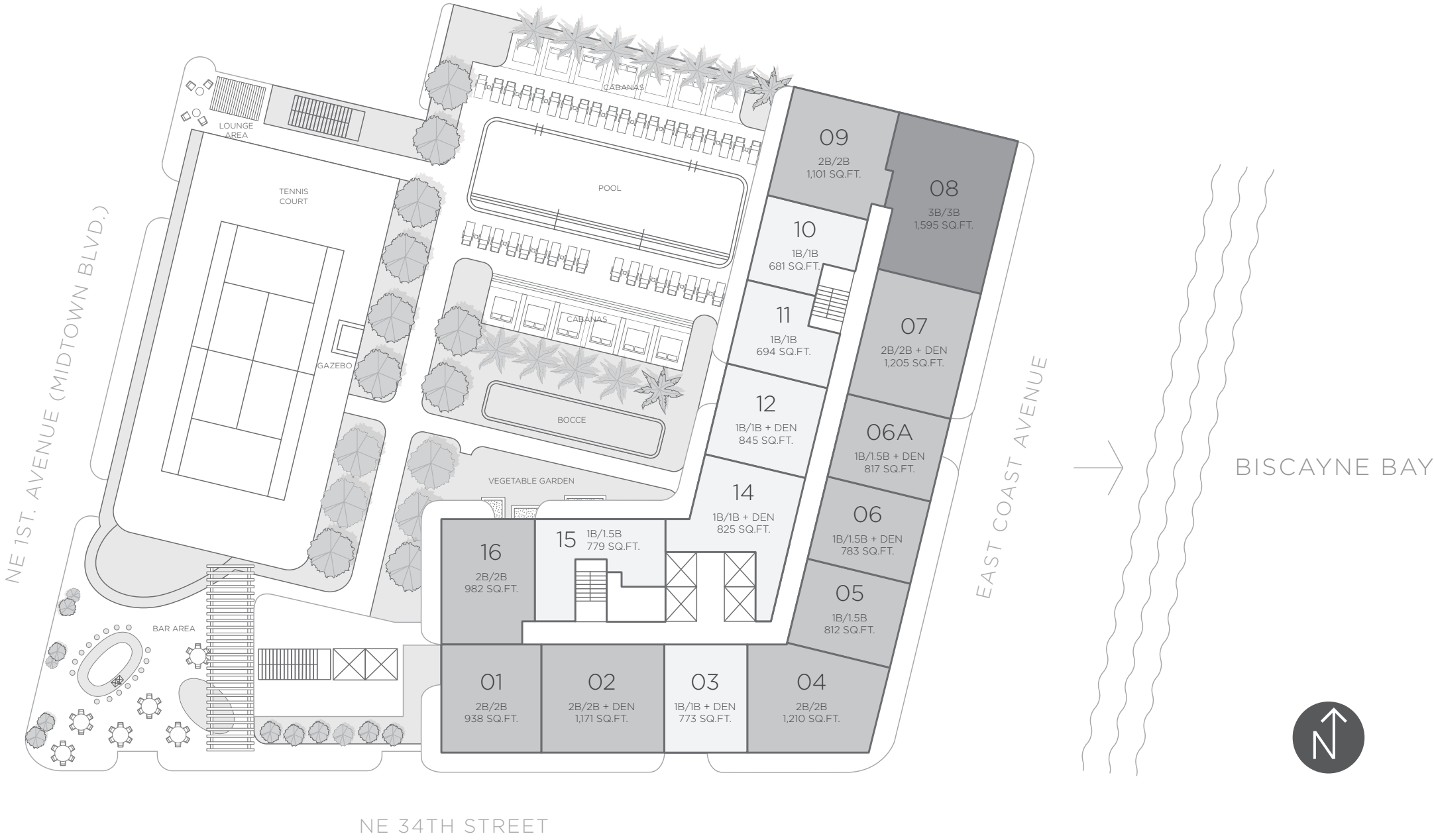
A/C INTERIOR AREA	779 sq ft / 72.37 sq m
TERRACE AREA	218 sq ft / 20.25 sq m
TOTAL RESIDENCE	997 sq ft / 92.62 sq m

FLOORS 8 - 31



KEY PLAN TOWER RESIDENCES

FLOORS 8 - 31



There are various methods for calculating the square footage of a Unit and depending on the method of calculation, the quoted square footage of a Unit in advertising materials may vary from the square footage of a Unit as stated or described in the Prospectus and the Declaration. The dimensions in the Unit shown in this floor plan have been calculated from the exterior boundaries of the exterior walls to the centerline of interior demising walls, including common elements such as structural walls and other interior structural components of the building and in fact vary from the dimensions that result by using the description of the "Unit" and dimensions set forth in the Prospectus and the Declaration. The area of the Unit, determined in accordance with "Unit" as defined in the Prospectus and the Declaration is less than the square footage reflected here. The configuration, allocation, and use of space or the floor plan design may vary from that depicted here or in the Prospectus and/or Declaration because the Developer reserves the right in the Prospectus to make architectural, engineering, design, dimension, specification, and floor plan changes at any time, in the Developer's discretion, without notice to Unit buyers. The measurement of any room in this floor plan is generally taken at the greatest points of each given room (as if the room were a perfect rectangle) without regard for any cutouts. Accordingly, the area of the actual room will typically be smaller than the product obtained by multiplying the length times width stated here. The furnishings, appliances, fixtures, and décor illustrated are not included with the purchase of the Unit. See Prospectus for information regarding what is offered with the Unit and the calculation of the Unit square footage and dimensions.



HYDE™
SUITES & RESIDENCES
MIDTOWN MIAMI





HYDETM
SUITES & RESIDENCES
MIDTOWN MIAMI

Floor Plans PH

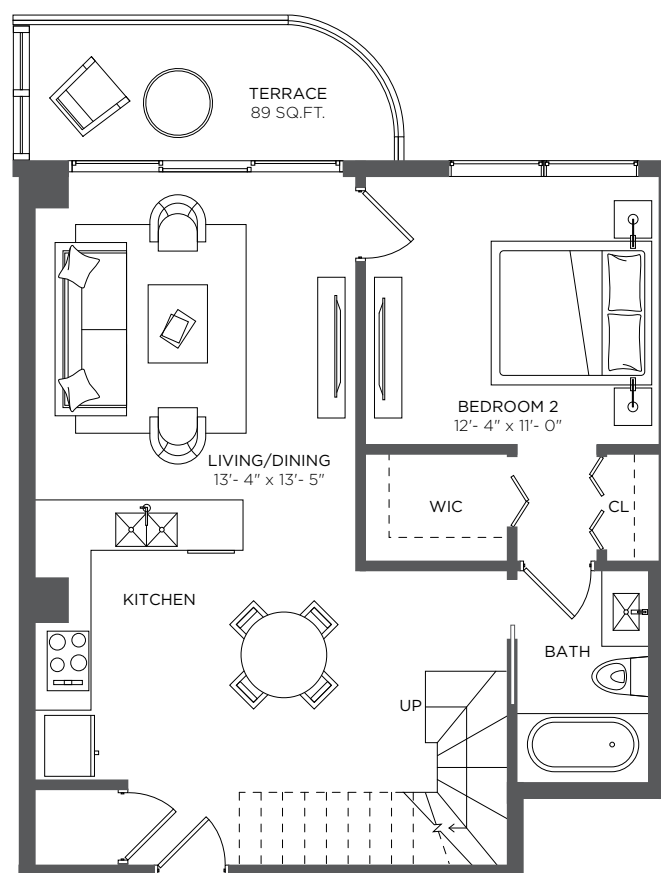
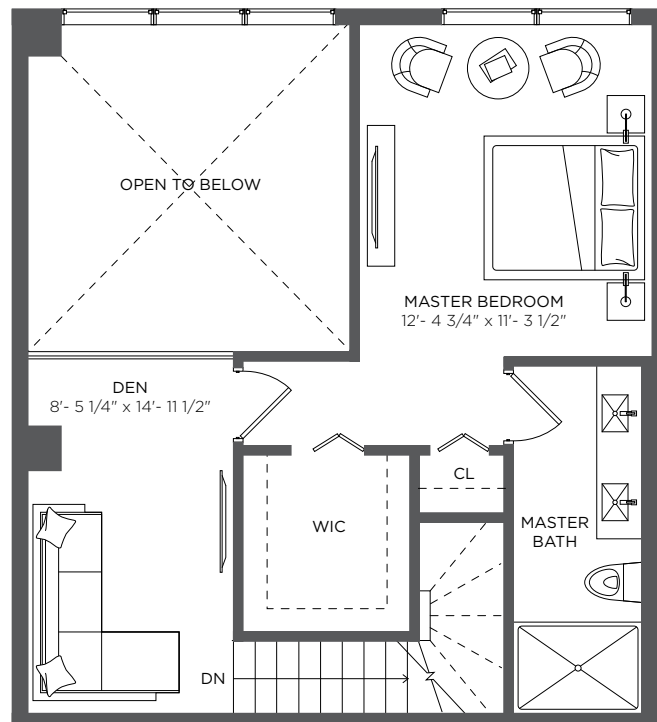
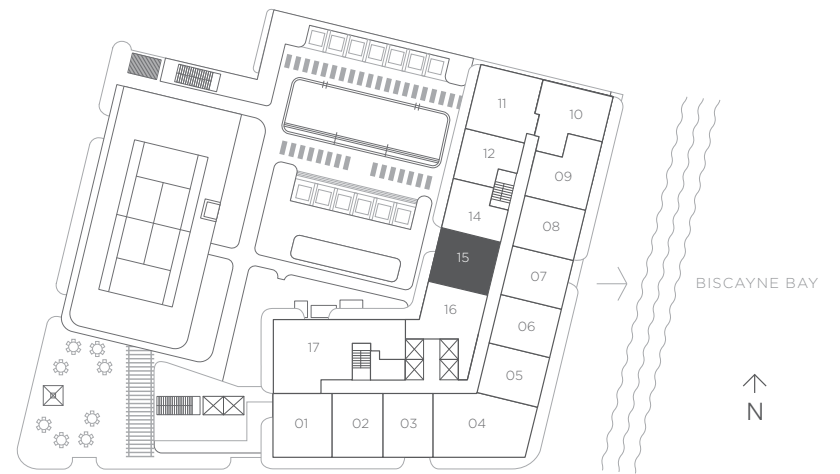
PENTHOUSE 15

2 Bedrooms 2 Baths + Den

A/C INTERIOR AREA 1,384 sq ft / 128.57 sq m

TERRACE AREA 89 sq ft / 8.26 sq m

TOTAL RESIDENCE 1,473 sq ft / 136.83 sq m



KEY PLAN PENTHOUSES



There are various methods for calculating the square footage of a Unit and depending on the method of calculation, the quoted square footage of a Unit in advertising materials may vary from the square footage of a Unit as stated or described in the Prospectus and the Declaration. The dimensions in the Unit shown in these floor plans have been calculated from the exterior boundaries of the exterior walls to the centerline of interior demising walls, including common elements such as structural walls and other interior structural components of the building and in fact vary from the dimensions that would be determined by using the description and definition of the "Unit" set forth in the Prospectus and the Declaration. For your reference, the area of the Unit, determined in accordance with the Unit boundaries as defined in the Prospectus and the Declaration are less than the square footage reflected here. The measurements of room set forth on this floor plan are generally taken at the greatest points of each given room (as if the room were a perfect rectangle) without regard for any cutouts. Accordingly, the area of the actual room will typically smaller than the product obtained by multiplying the stated length times width. All dimensions are approximate and may vary with actual construction. All floor plans are subject to change. The furnishings and décor illustrated are not included with the purchase of the Unit. See Prospectus for information regarding what is offered with the Unit and the calculation of the Unit square footage and dimensions.